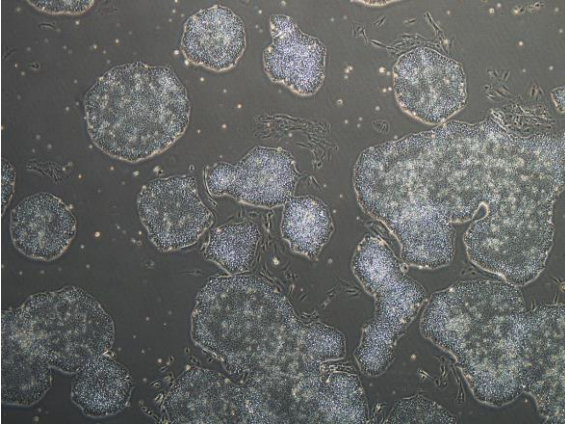
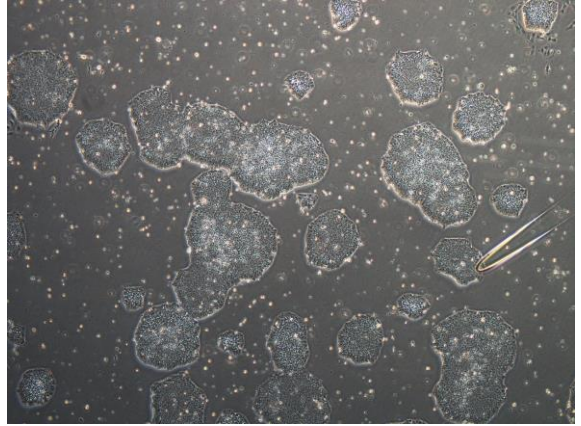


【 CiRA-j-1017 】 Morphology of iPSC colonies

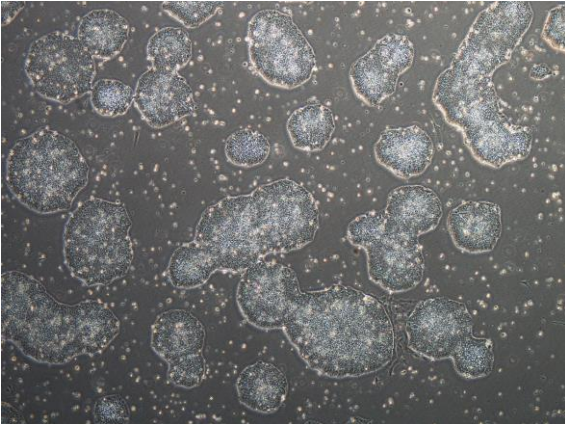
CiRA-j-1017-A: passage-2



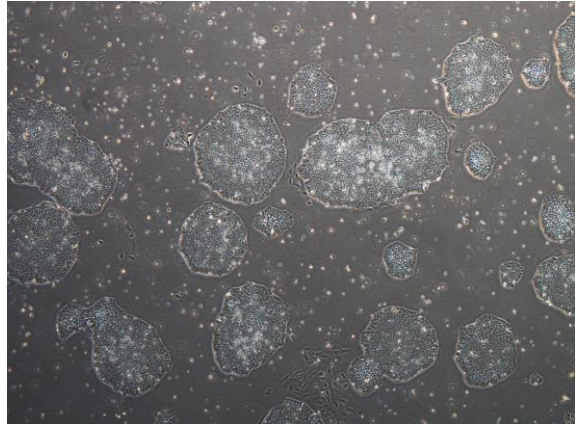
CiRA-j-1017-B: passage-2



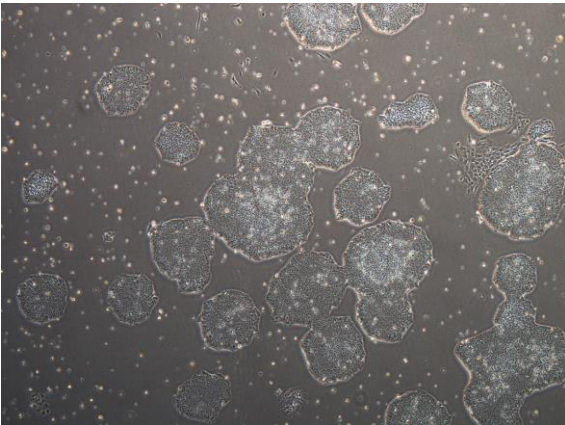
CiRA-j-1017-C: passage-2



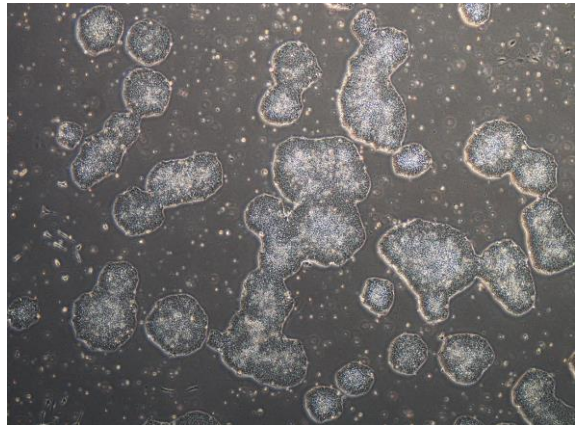
CiRA-j-1017-D: passage-2



CiRA-j-1017-E: passage-2



CiRA-j-1017-F: passage-2



(All images were captured at 4x magnification)